

Q16pro upgrade guide

<u>CSD No:</u>					
<u>Product/ Project:</u>		Q16pro upgrade guide			
<u>Version</u>	<u>Date</u>	<u>ECO#</u>	<u>Description</u>	<u>Reporter</u>	<u>Responsible</u>
	2023.02.13	000#	release	张怡	
Document purpose: to guide the upgrade of Q16pro					

1、Upgrade overview

- (1) Q16pro device program upgrade
- (2) Upgrade the H265 network port of the preview board

2、Upgrade Operation Guide

Steps:

- (1) preparation tool:

Upgrade tool installation package: XT00L, upgrade wire



USB-RS232 serial cable + RJ11 to serial cable



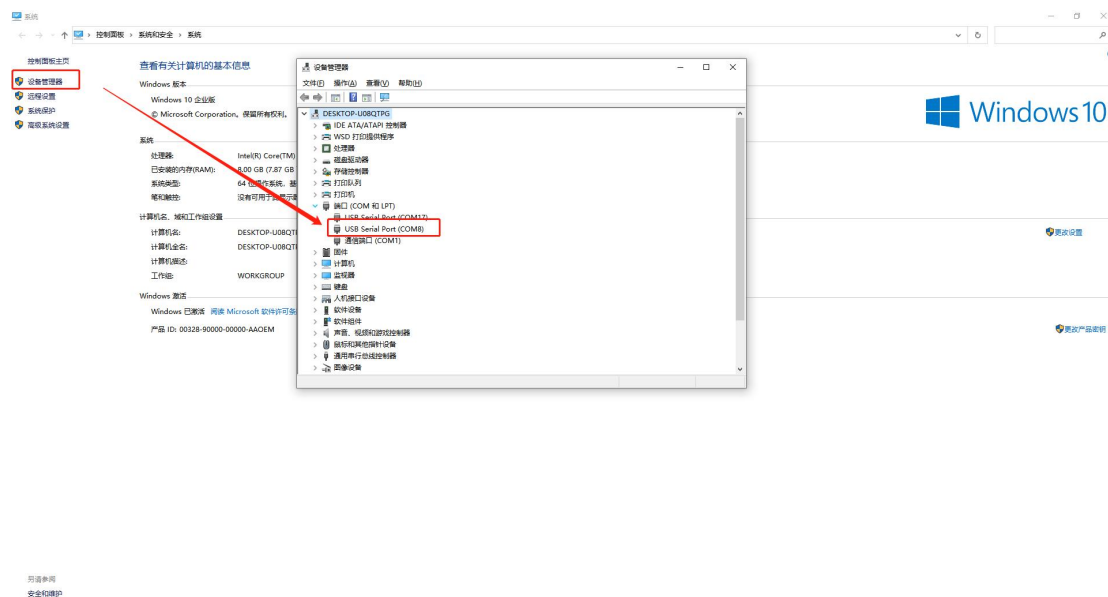
cable

- (2) Upgrade method description:

Serial upgrade

①Turn on the device and connect the PC to the device with a USB-RS232 serial cable + RJ11 to serial cable;

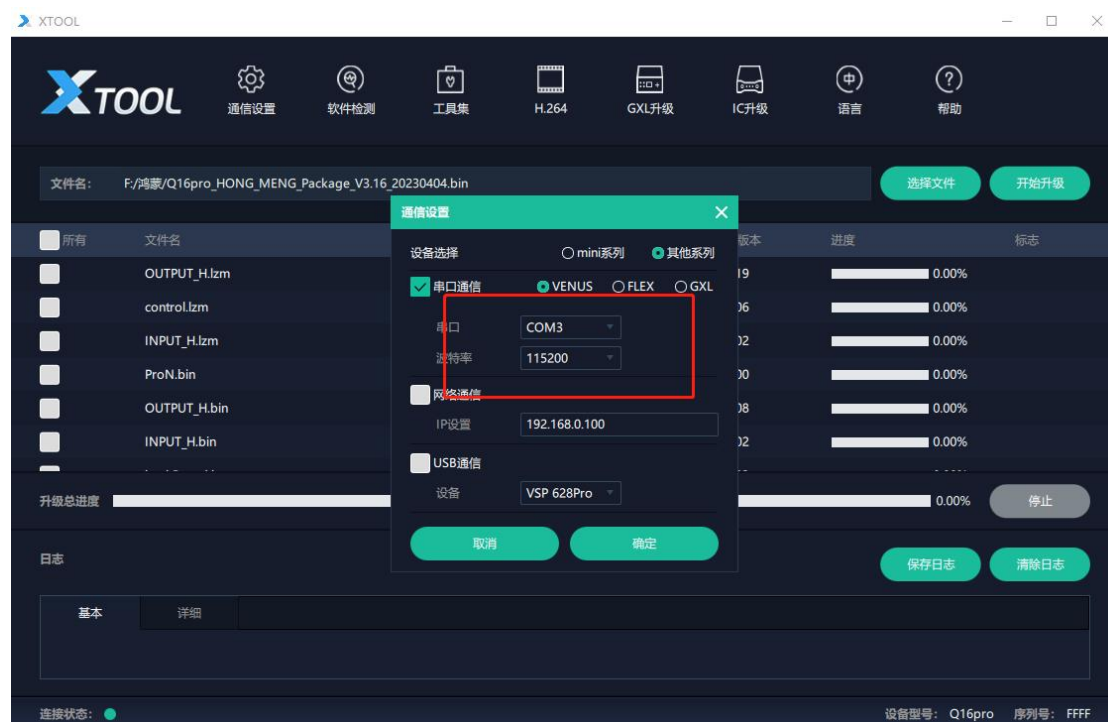
②Install the driver and obtain the serial port number: On the desktop of the computer, right-click the "Computer (My Computer)" icon, property device manager, and check the COM port number at the USB Serial Port (COM3) under the port, as shown in the figure below:



Remarks: If the Windows computer does not recognize the corresponding serial port number, you can install the driver of the serial port line through tools such as "Drive Wizard" or "Driver Life";

③Open the upgrade tool software XT00L on the PC, enter the main interface of XT00L, and select "Communication Settings";

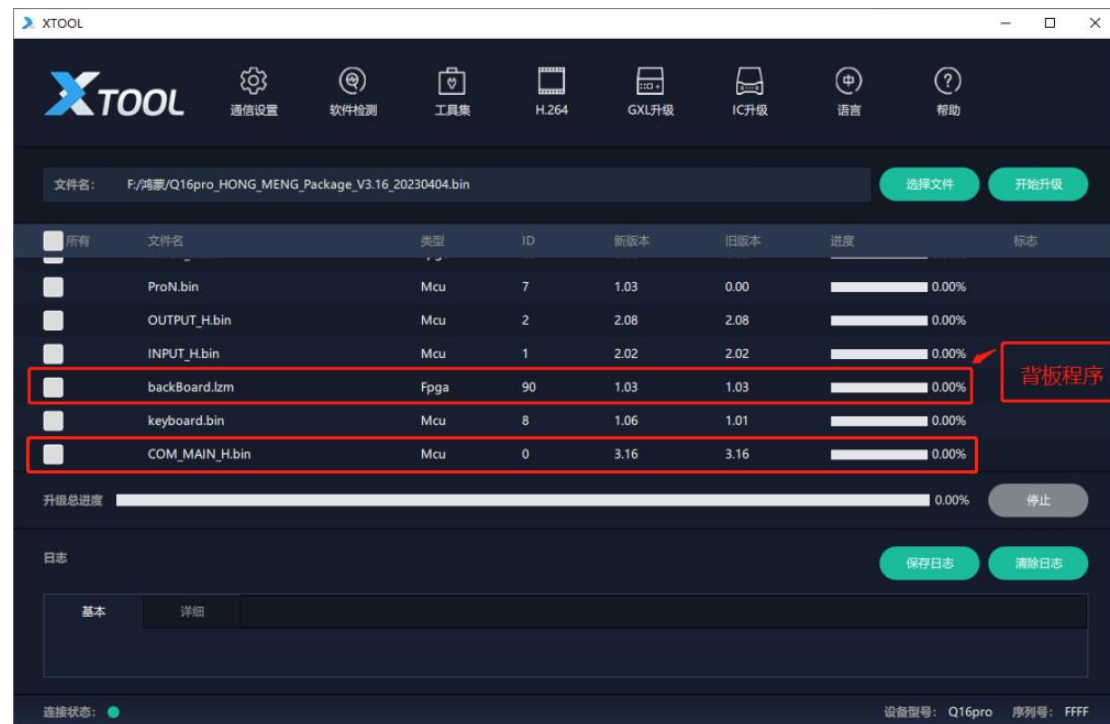
④In the communication setting dialog box, select "serial port communication", select the corresponding COM port, and set the baud rate to 115200, and then click "OK";



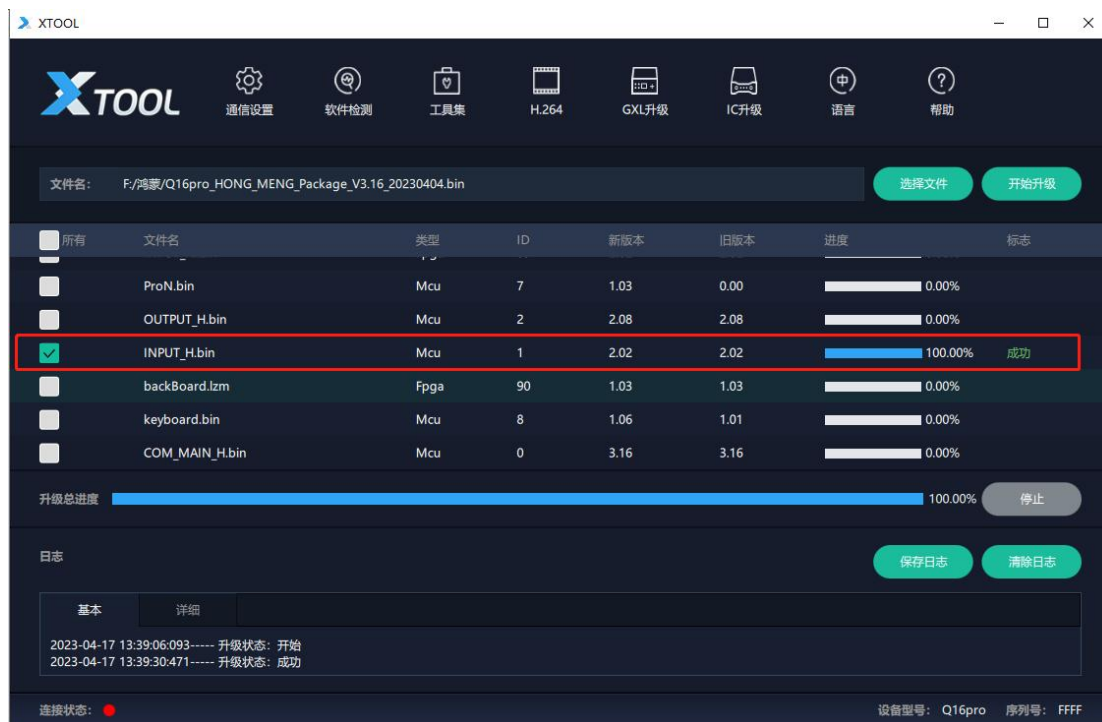
⑤upgrade program

After setting the communication mode, the green light of the connection status is on, select the corresponding software program, first upgrade the communication mcu program, and then upgrade the fpga program;

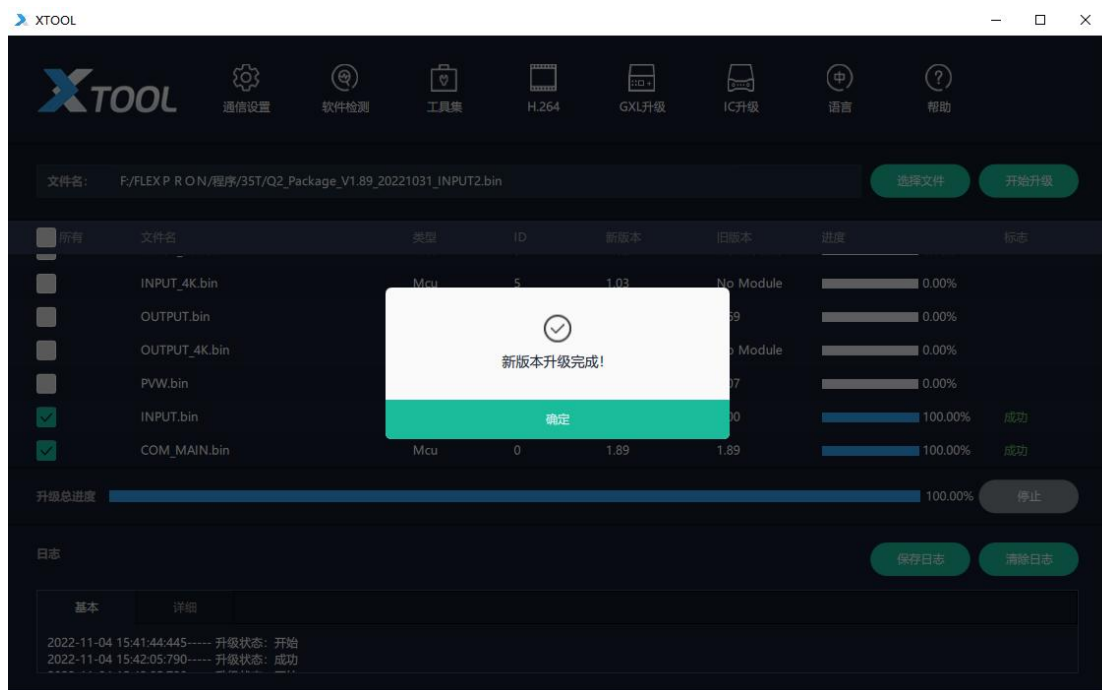
New equipment needs to upgrade the communication board mcu and backplane program first



During the upgrade process, you can check the upgrade progress and the upgrade result of each submodule program through XTOOL



After the program upgrade is completed, there will be a "new version upgrade complete" prompt, and the device needs to be restarted after the upgrade is completed;



Cable upgrade

Upgrade communication method: network communication

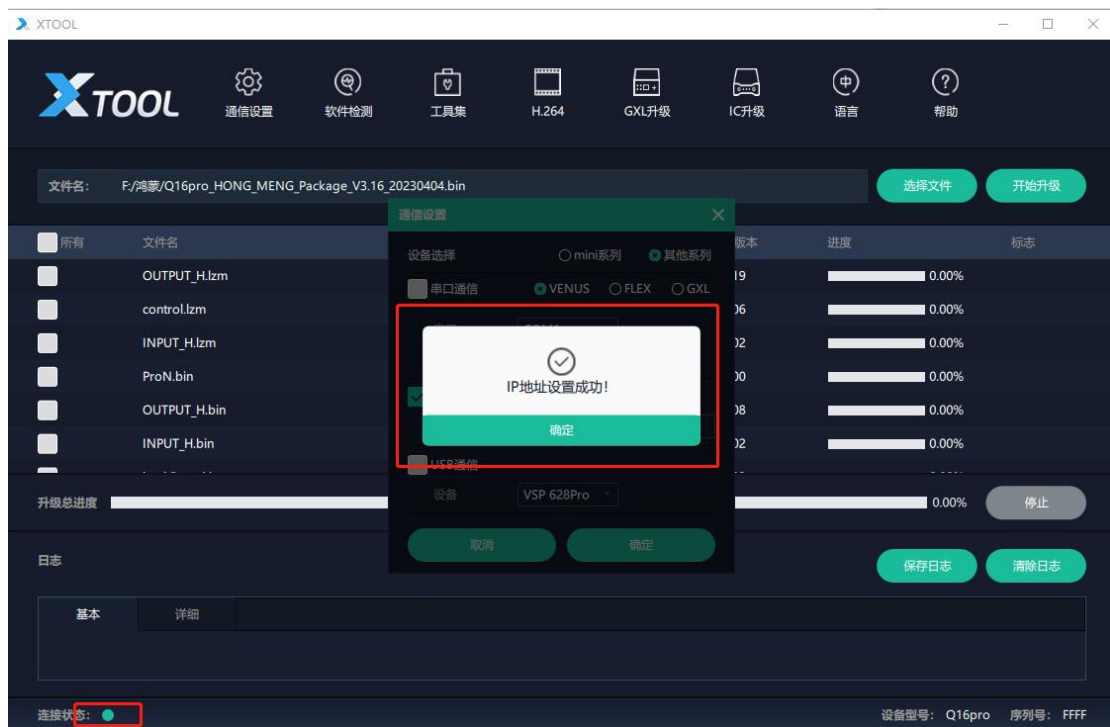
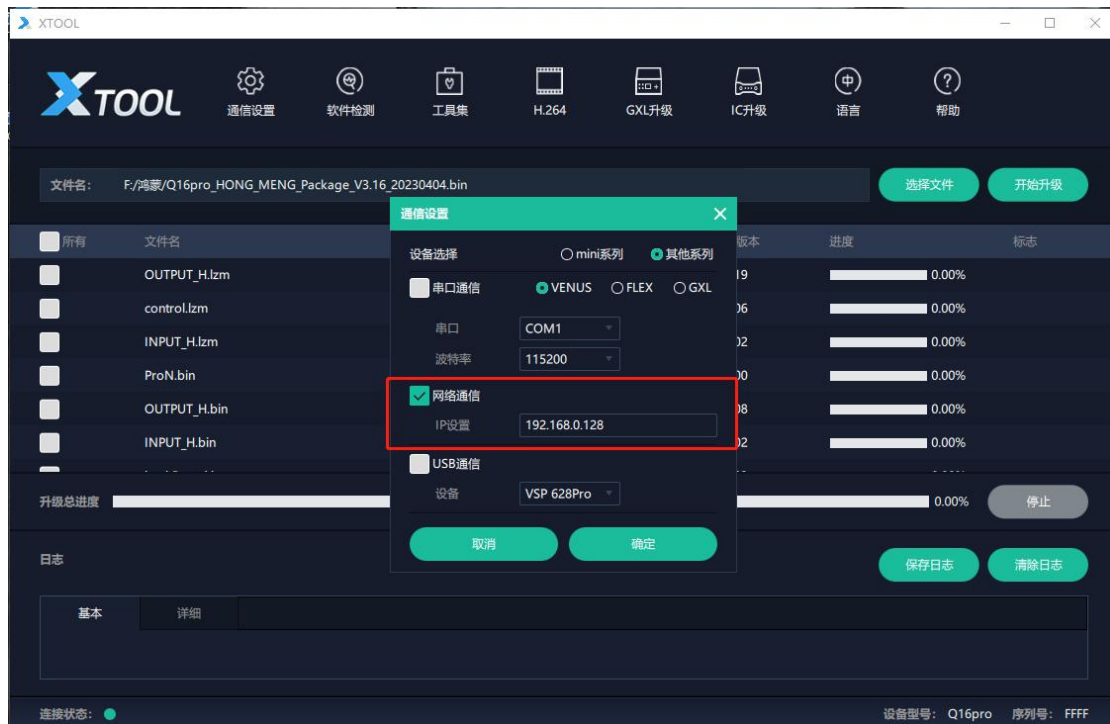
In the communication setting dialog box, select "serial communication", fill in according to the IP address of the current FLEXP RON device, such

Xiamen Shicheng Technology Co., Ltd. Website: www.rgblink.com

Address: S601-S609, Weiye Building, Pioneer Park, Torch High-tech Zone, Xiamen City

Tel: +86-0592-5771197 Fax: +86-0592-5788216

as 192.168.0.128 (FLEXPRON default IP 192.168.0.100)



After the connection is successful, it is consistent with the serial port upgrade;

Upgrade Note: Do not power off immediately after the upgrade is complete, please wait for 1 minute before powering off;

(3) Upgrade the H265 network port of the preview board

Xiamen Shicheng Technology Co., Ltd. Website: www.rgblink.com

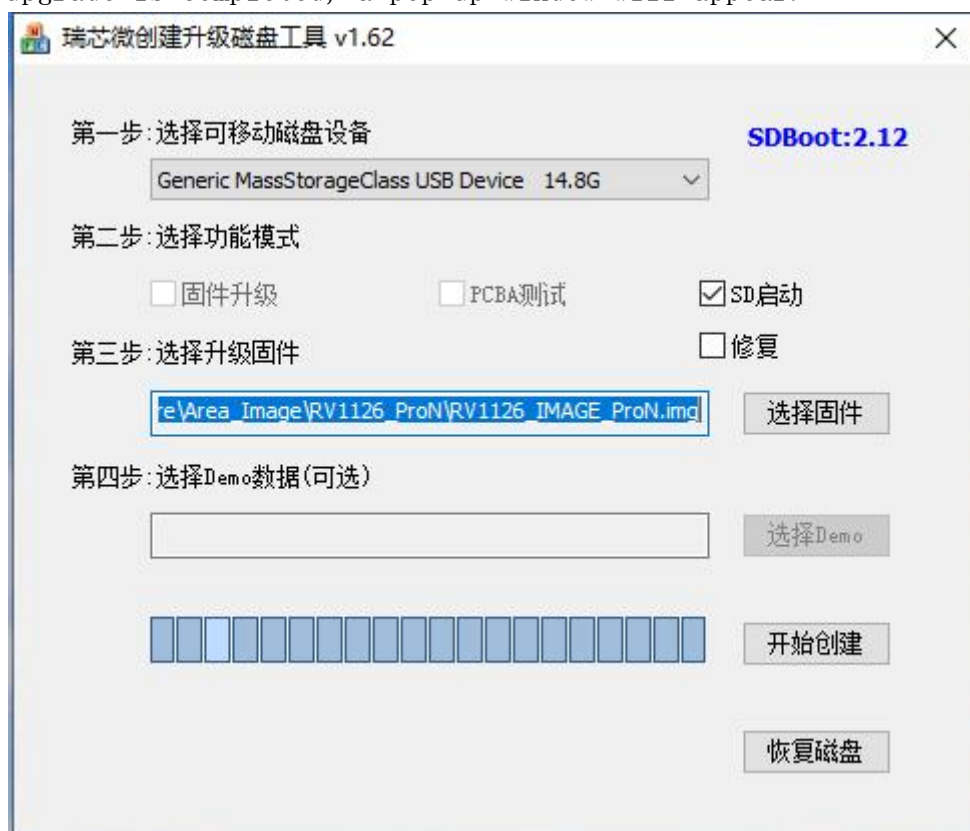
Address: S601-S609, Weiye Building, Pioneer Park, Torch High-tech Zone, Xiamen City

Tel: +86-0592-5771197 Fax: +86-0592-5788216

Note: This upgrade program is the upgrade software provided by the manufacturer. Without permission, it is not allowed to provide this document and upgrade tools to the outside world.

Upgrade steps:

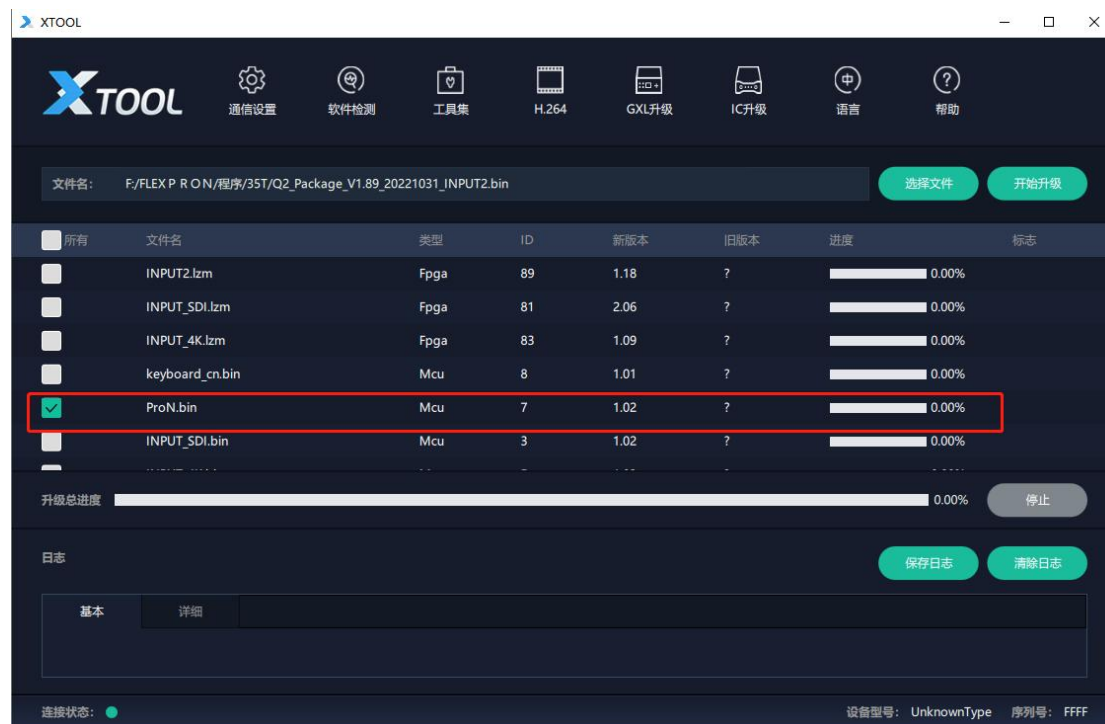
- ① Open the Rockchip disk upgrade tool on the computer and insert the SD card;
- ② When the USB device information as shown in the figure appears in the first step, select the function mode as "SD boot";
- ③ Select the firmware to be upgraded;
- ④ Click to start creating and wait for the upgrade to complete. Do not close the program or pull out the SD card during the upgrade process. After the upgrade is completed, a pop-up window will appear.



After the upgrade is successful, put the SD card back on the communication board



If there is an update later, you can upgrade the ProN.bin program on XTOOL



After the upgrade is successful, XPOSE will recognize a string of irregular physical addresses, and the upgrade is successful;

Xiamen Shicheng Technology Co., Ltd. Website: www.rgblink.com

Address: S601-S609, Weiye Building, Pioneer Park, Torch High-tech Zone, Xiamen City

Tel: +86-0592-5771197 Fax: +86-0592-5788216

